

# scanX

ultrasound



## Your New ScanX Quick User Guide

## Foreward

The ScanX ultrasound machine is the culmination of over 10 years of experience working with veterinarians, dog and cat breeders, goat and sheep farmers, wildlife rescues, marine biologists - and more. Getting to know you, listening to your needs, and designing equipment that meets and exceeds them.

The ScanX is that perfect combination of ultimate portability, durability, and stunning image quality. As soon as we held that first prototype in our hands, we knew that we had created magic.

Every single ScanX unit is put together by our team here in London. It is carefully tested and packaged up for its important journey to you. I am proud of the care and expertise that goes into every one of our machines, and the work that our clients ultimately perform with them.

I hope that you will enjoy using your ScanX ultrasound machine as much as we do. Please do share your scans with us on social media or by email, and keep in touch as you continue with your scanning adventures!

Catherine Stowell  
Director & Sonographer

## Getting Started With Your ScanX:

To power your tablet on, press and hold the power button at the top left.

Once the tablet has powered on and your probe is inserted, double tap the 'ScanX' icon, located on the left hand side of your desktop. This will launch the ScanX scanning application.

**Always connect your probe to your tablet before launching the ScanX software. Never connect or disconnect an ultrasound probe when in live scanning mode.**

## Connecting Your Device To WiFi:

To connect your tablet to WiFi, before launching your ScanX software, tap the WiFi icon at the bottom right. Find your WiFi network and enter your password, which is usually located on the bottom of your router.

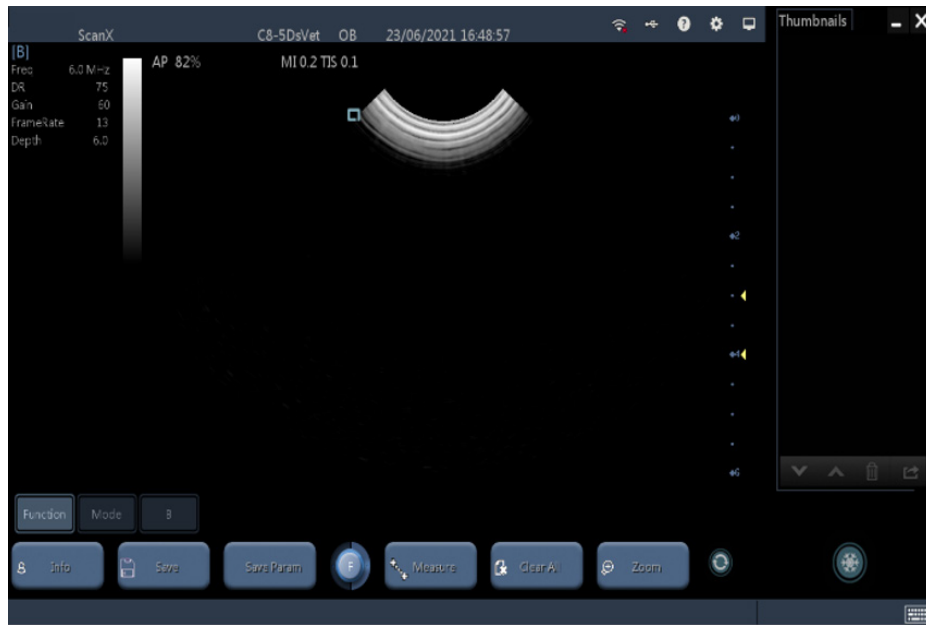
Having an internet connection will enable you to receive remote support if you need help, and to backup your images and video clips onto the ScanX cloud.

## Getting Help:

Our sonographers are on hand to help you get the most out of your machine - just email [contact@scanxultrasound.com](mailto:contact@scanxultrasound.com) with your question, and we will respond promptly.

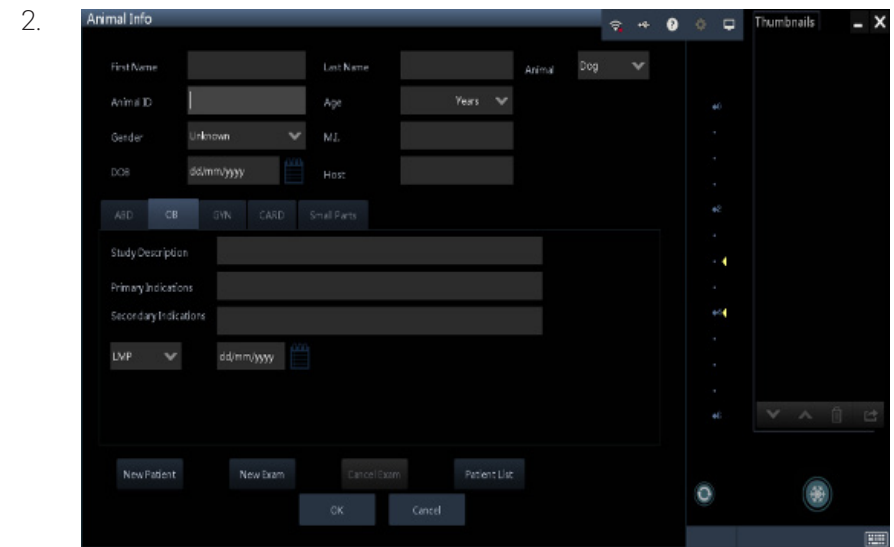
If you are stuck with a technical problem, one of our engineers can remotely connect to your machine, free of charge, for the lifetime of your machine. You can connect with us on online chat (9am - 5pm EST; 2pm - 9pm UK time, Monday-Friday, excluding bank holidays), or schedule a remote support session in advance by emailing: [contact@scanxultrasound.com](mailto:contact@scanxultrasound.com)

Once you see this screen, you can start scanning:



## To Enter Patient Data:

1. Select Function and Info to set up a new patient.



a. **<New Patient>**

Enter patient information in the **<Patient Info>** screen & press 'OK.'

b. **<New Exam>**

To start a new exam for a saved patient, the recorded information can be obtained through **<Patient List>**.

c. **<Patient List>**

To start a new exam for a saved patient, tap **<Patient Name>**.

**NOTE:** To resume live scanning and return to main screen, press 'OK' to save or cancel, then press 'B' for live scanning mode.

## Main Controls:

Gain	Depth	Frequency	Persistence	Dyn Range	Focus Position	Freeze
<p>Amplifies the returning signal.</p> <p>Increase Gain if your image is too dark and decrease if your image is too bright.</p> <p>Tap <b>GAIN</b>.</p> <p>Use finger to <b>increase Gain by tapping spot to the RIGHT. This will increase the brightness of your image.</b></p> <p><b>Tap to the LEFT to decrease the Gain and reduce the brightness.</b></p> <p>Do not drag your finger to adjust.</p>	<p>Utilize as much of your scanning area as possible by reducing your depth so that your region of interest fills your screen.</p> <p>Tap <b>DEPTH</b>.</p> <p>You will see the scale on the RIGHT of your image. Each dot = 1 cm.</p> <p>Tap the bar to the desired location. Do not drag your finger.</p> <p><b>LEFT reduces the depth</b> to scan shallower.</p> <p><b>RIGHT increase your depth</b> to scan deeper into the body.</p>	<p><b>Higher Frequency</b> = Greater resolution but reduced penetration.</p> <p><b>Lower Frequency</b> = Reduced resolution &amp; greater penetration.</p> <p><b>Use the highest frequency possible to reach the necessary depth to view what you aim to see.</b></p> <p>Tap <b>FREQ</b> this will display the available frequency ranges for the probe you have connected.</p> <p><b>Tap the FREQUENCY of your choice.</b></p>	<p><b>We suggest you leave PERSISTENCE on the default setting.</b></p> <p>Adjusting PERSISTENCE changes the frame rate per second. Higher frame rate will cause a delay between probe and image.</p> <p>Lowering the PERSISTENCE will increase the responsiveness.</p>	<p><b>Dynamic Range alters the number of grey shades in the image.</b></p> <p>Lowering the dynamic range will reduce the number of grey shades in the image and give you a more contrasty image.</p> <p>Increasing the dynamic range will give you a much smoother image as you get more grey shades in the image.</p>	<p>Tap FOCUS POSITION. Do not drag to adjust.</p> <p><b>Move to the LEFT or RIGHT to adjust the FOCUS POSITION of your image to where you want to see the most detail.</b></p> <p>Ultrasound beam will be nipped in at the level of interest.</p>	<p>Freezes an image to Save.</p> <p>Press <b>Snowflake</b> icon on right side of bottom screen.</p> <p><b>To unfreeze, touch and drag snowflake icon.</b></p>

## Save An Image:

- Use the <Freeze> icon to freeze the image.
- Click the <Save> button that appears to save a still image. Alternatively click <Save Cine> to store a video clip.
- Click and drag the <Freeze> button to the right to resume live scanning.

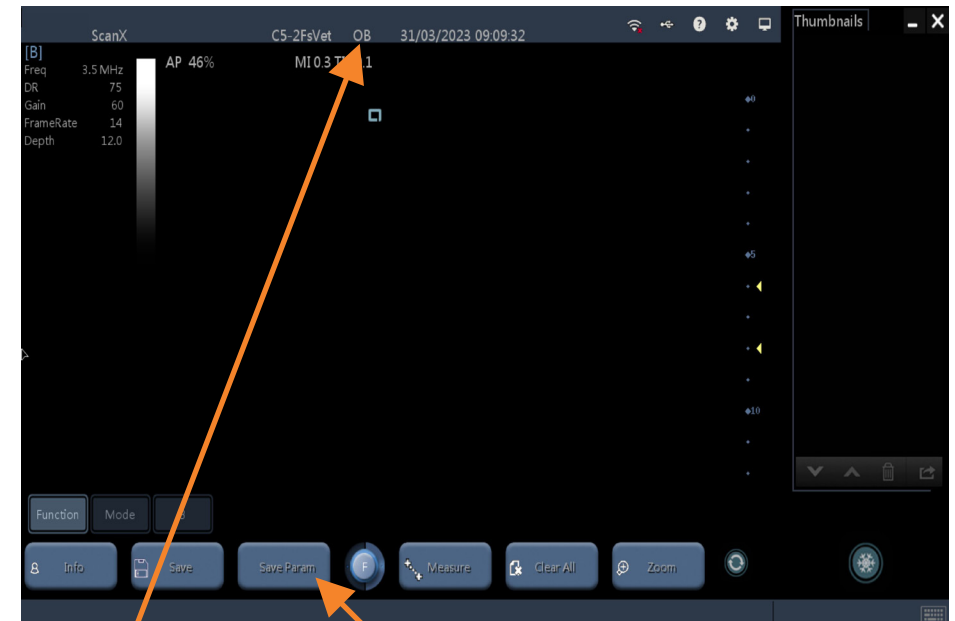


### Mode options:

- **B** – this will take you to your normal 2D imaging mode, press this to reset to 2D imaging and come out of any Doppler modes you have put on.
- **2B** – this gives you split screen, allowing you have a frozen 2D image on one side of the screen and a live scanning image on the other side.
- **B&M** – this will give you an M-mode image. The cursor will appear on the system, and you can adjust the position by touching the cursor and dragging it to your desired place. M-mode will just scan along the line of the cursor, giving you better temporal resolution.

*Color, Power and PW are not active on this system so will not activate when you press them.*

## Saving A Preset:



Preset

Saving a preset

If whilst you have been scanning you have changed some settings, you can save these as a preset for future scans.

- Hit the <Function> key followed by <Save Param>.
- When the new text box comes up, hit <OK>.
- This will overwrite the current preset you are in. You can check which preset you are in by looking at the top of the screen. In this example, we are in **OB**.
- To check your presets, hit the cog button on the top *right hand* side of the screen.
- Once in this settings menu, go down and select the **Image Preset** tab.

## Getting the most out of your ultrasound machine

If you are ready to learn more about your ScanX system, we offer free training videos on our YouTube channel. Simply scan the QR code below, or visit [youtube.com/@portableultrasoundmachines](https://youtube.com/@portableultrasoundmachines)



S C A N X  
u l t r a s o u n d

## Ultrasound certificate

If you would like to attend one of our sonographer-taught training courses, please email us at [contact@scanxultrasound.com](mailto:contact@scanxultrasound.com) for current dates and pricing.

Happy scanning!

S C A N X  
u l t r a s o u n d

[www.scanxultrasound.com](http://www.scanxultrasound.com)