

VIS SCANPAD+ ULTRASOUND

FOR BREEDERS

Determine pregnancy, assess fetal viability and formation, assess number of fetuses, monitor development, calculate whelping/queening dates, and more.

ULTRASOUND FOR BREEDERS. YES, YOU CAN!

Mitigate the travel, stress, and expense that routine prenatal x-rays demand.

Ultrasound offers a safe, convenient option allowing breeders to go into whelping/queening with more confidence.

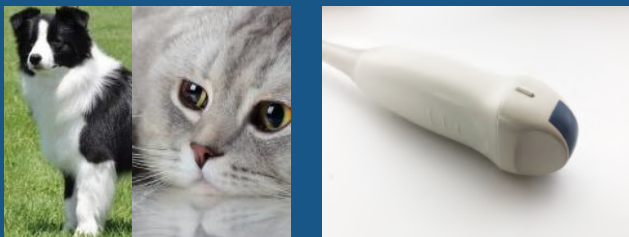


Ultrasound is best performed at 25–35 days gestation in dogs and cats. Day 28 post ovulation is ideal/earliest to view pregnancies successfully.

- ✓ Bright, 15-inch high-resolution touchscreen monitor
- ✓ Intuitive and user-friendly design
- ✓ Interchangeable Probes
- ✓ Auto Image Optimization
- ✓ Minimize travel & stress
- ✓ Canine & Feline Obstetrics and Gynecology Settings
- ✓ Detect pregnancy early
- ✓ Monitor fetal development

One probe is included with your ultrasound. We recommend:

Micro-Convex Probe



Ideal for all cat breeds and dog breeders scanning small to medium sized dogs such as:

Chihuahua, Toy Poodle, Pekingese, Corgi, Cocker Spaniel, Labrador, German Shepherd, Standard Poodle, Border Collie, Doberman, Yorkshire Terrier, Dachshund, West Island White Terrier, Whippet, Shih tzu, etc. All cat breeds.

Convex Probe



With a larger footprint and a lower frequency, achieve desired penetration in larger breeds with a lot of mass to scan through such as:

Bernese Mountain Dog, Old English Sheep Dog, Newfoundland, Saint Bernard, etc.

Ultrasound scanners come in all shapes and sizes, it can be difficult to know where to start. You can spend as little as \$1,000 or up to \$150,000. We fully vetted the VIS ScanPad+ to ensure it is a safe, high-quality ultrasound so you don't have to. As a breeder, owning your own ultrasound can become an invaluable part of your breeding program, but choosing the right machine is essential. The internet is full of 'amazing' deals, but **there are 4 key things to be aware of when choosing an ultrasound machine as a breeder:**

✓ IMAGE QUALITY

A poor-quality scanner offers low image resolution resulting in grainy images, which make interpreting them accurately difficult. Machines can look the same on the outside and be of wildly different quality on the inside! Many low-end scanners use dated probe technology (mechanical sector probes) that vibrate, which some animals find stressful.

✓ TRAINING & ONGOING SUPPORT

Many professional breeders are using ultrasound due to the convenience of having a scanner readily available in the comfort of their own space. It is possible to learn to ultrasound confidently and with success. PetTech Solutions is your one stop solution for best in class machines and the education.

✓ WARRANTY SUPPORT

Expect a warranty of at least 1-year from a company you can go back to easily. You can get machines on eBay from faraway places like China, but if they are a reputable company making high-quality machines, they will have a local distributor or representative who can support you if anything goes wrong.

✓ PROBE TYPE

Probe quality is critical for a good image, how many crystals are used in the probe construction is key. Dated mechanical probes use one crystal, whereas newer, electronic probes use several. The more crystals, the better the image resolution. Opt for an electronic probe with at least 80 crystals and ensure correct probe size and frequency for small animals.