

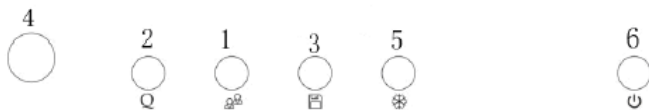
Scan Pad Quick Start Guide



GETTING STARTED WITH YOUR SCAN PAD

Connect your probe to the back of the Scan Pad **before** turning the power on and follow the **FIRST TIME SET UP STEPS**.

The key controls are on the bottom front of your scanner and are:



No.	Name	Description	Function
<1>		New Patient	Press to enter the [Patient Info] screen
<2>		One Touch Optimization	Press to auto-optimize the image.
<3>		Save	Press to save a single frame.
<4>		Multifunctional knob	1) When scanning, turning this knob will adjust gain. Pressing it once will temporarily switch to depth adjustment. 2) When in the menu, you can use the knob to select different options. 3) In cine mode, scroll back through your frames using this knob.
<5>		Freeze	Press to freeze or unfreeze the image.



FIRST TIME SET UP STEPS:

Remove the protective plastic cover placed on the screen. This cover is meant to be removed. It can be tricky to see if it's been centred perfectly. Find an edge and peel this off.

Function (touchscreen button), Press **Probe** (touchscreen button located below **Function** button). You will now be in the **Probe and Exam** page.

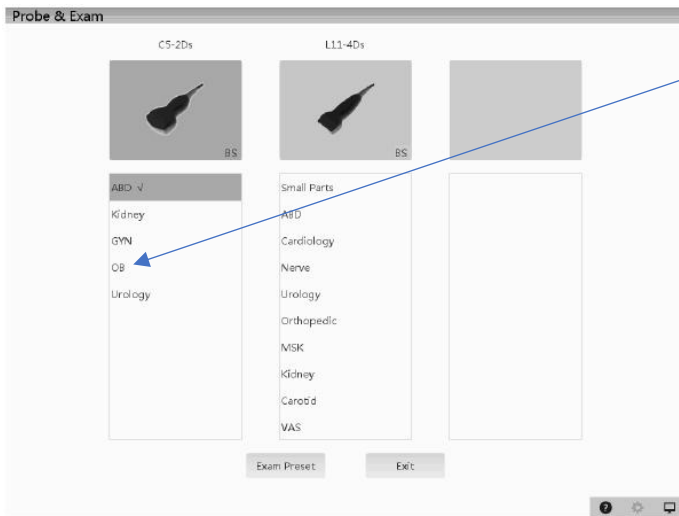
Press **Exam Pre-Set** (touchscreen button), this opens the **Set-Up Exam Selection** page. In the **Exam Selected** table shown, press **OB** (on the touchscreen). Then press **APPLY** (touchscreen button). This set's **OB** (obstetrics) as your default setting.

Press **EXIT** (touchscreen) on the left side of the screen.

You are all set to get started!

TO START AN EXAM

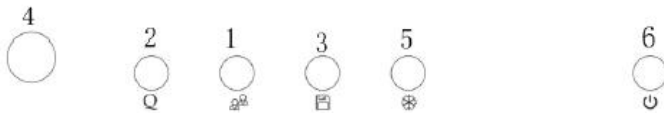
1. Press **Function** (touchscreen button)
2. Press **Probe** (touchscreen button located below **Function** button). You will now be in the **Probe and Exam** page again.



3. Press **OB** and ensure the **OB** setting is highlighted in blue, you will now automatically enter the live scanning page.

YOU CAN START A PATIENT EXAM A FEW WAYS, THE CHOICE IS YOURS:

1. Press button <1> New Patient



No.	Name	Description	Function
<1>		New Patient	Press to enter the [Patient Info] screen



To start a new patient exam, it is better to enter the detailed patient information. The system will set up a unique information database for each patient based on the animal information entered, so that the information of one patient will not be confused with that of another patient.

2. Select either by tapping on the touchscreen:

- | | |
|--|--|
| <ul style="list-style-type: none"> a <New Patient> b <New Exam> c <Patient List> d <Anonymous Detection> | <p>Enter patient information in the <Patient Info> screen & press 'OK'</p> <p>To start a new exam for a saved patient, the recorded information can be obtained through <Patient List></p> <p>To start a new exam for a saved patient. Tap <Patient Name>.</p> <p>Make an exam directly without inputting the name.</p> <p>The animal ID will be generated automatically by the system or inputted manually.</p> |
|--|--|

STARTING YOUR SCAN

Apply ultrasound gel to your probe.

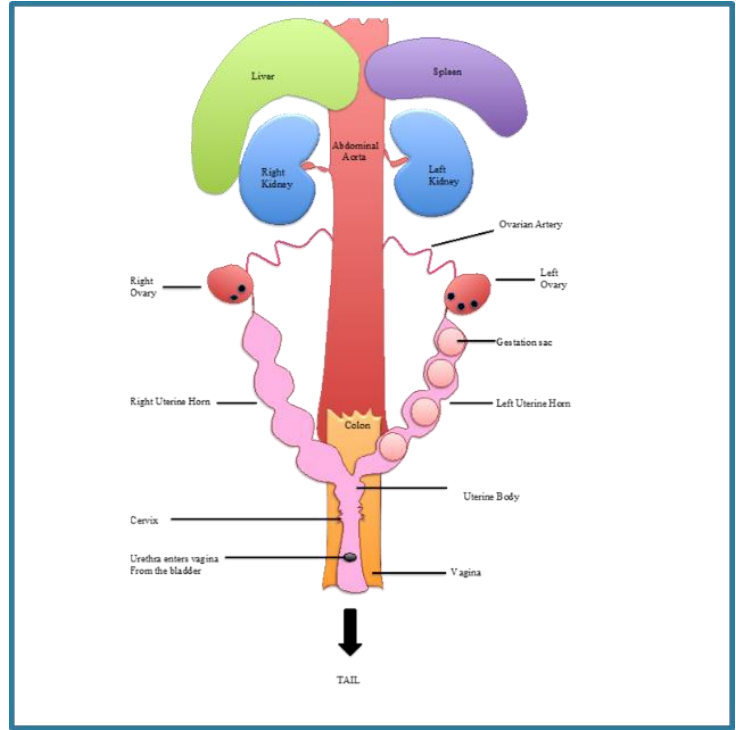
The easiest method for pregnancy detection is to scan along the midline of the bitch/queen, starting at the bladder (nearest the tail) & working up to the liver.

Adjust the image controls, so that the area of interest is in the middle of the screen (refer to manual).

Scan in the nipple line up to the liver & spleen.

Return down to the bladder dipping the probe, angling to the left, then repeat the sweep angling & dipping to the right.

Only after completing a methodical survey of the abdomen, can you be sure that you have not missed anything.



KNOW YOUR KEY CONTROLS

GAIN	DEPTH	SAVE	FREEZE	FREQUENCY (touchscreen button)
Amplifies the returning signal. Twist this up if your image is too dark, and down if it is too bright.	Press it once to switch to Depth control from Gain control): Utilize as much of your scanning area as possible by reducing your depth so that your region of interest fills your screen.	Press Save to save your image in the systems memory to view later.	Freezes an image to Save or scroll back in time to view (by turning the far-left knob).	Higher Frequency = Greater resolution but reduced penetration & Lower Frequency = Reduced resolution & greater penetration. <i>Use the highest frequency possible to reach the necessary depth to view what you aim to see.</i> Pen, Gen, Res, THPen, PHGen, THRes. 'Pen' & 'THPen' will give you better <i>penetration</i> . (lower frequency = deeper penetration) 'Res' & 'THRes' will give you better <i>resolution</i> . Therefore, 'Pen' & 'THPen' can help to obtain an image on larger breeds.



Helpful Tips & Tricks...

- Both your monitor and transducer come with protective covers. You do not *need* to remove the clear screen protector cover to use your machine, but you must remove the protective strip from the transducer head to be able to scan.
- Ultrasound gel is an acoustic couplant, not simply a lubricant. As such, it is not advisable to substitute ultrasonic gel for any other type of gel or cream. In an emergency, the best substitute for ultrasound gel is water, as it has a similar acoustic impedance to ultrasound gel and soft tissue. It is not recommended to use alcohol as it will damage your probe head over time.
- Ultrasound waves do not pass-through air. Air blocks the ultrasound waves since hair and fur can trap air bubbles and interfere with the image. It is ideal to shave the area to ensure direct contact between the ultrasound probe and skin (and of course, gel) **unless there is little hair/fur interfering with the image**, in which case, shaving is unnecessary. The ultrasound gel eliminates air between the probe and the skin surface. Remember, air is the enemy! If you don't want to shave, do your best to wet down the hair/fur with water and gel and separate it so that the probe has good contact with the skin.
- Don't be afraid of playing with controls! It's the best way to learn and remember they will always reset back to default once you turn off your machine. Remember, you can freeze an image while scanning to stop transmitting ultrasound waves to allow you to focus on the image and adjust settings.

Finally, try to adjust the gain, the depth and frequency to ensure you make the most of what you're seeing!

Or try the Image Optimization button to auto-optimize the image.

Button <Q> on front panel of your ultrasound.

Let us know if you have questions and send us your scans! We love to keep up with how you are doing!

info@fps.email

1.800.672.9182