

IBEX LITE

portable | rugged | ultrasound



E.I. Medical Imaging®

lite

DESCRIPTION

With 90% of the features and the same image quality of the Ibex® Pro, the Ibex® Lite is the ideal choice for bovine ultrasound. From basic repro to fetal sexing and calf lungs, the Ibex® Lite has all the features you need in an ultra light, ruggedized package.

With most of the features of the Ibex® Pro but without the added weight and cost of the screen, the Ibex® Lite is ideal for dairy practice and outdoor field work. The video headset is great for working in both bright sunlight and low light conditions, and there are a variety of interchangeable transducers available. Worn around the waist, the unit is lightweight and makes for streamlined workflow. Like the other products in the Ibex® line, the Lite is rugged and water-resistant, with long battery life.



FEATURES

- DuraScan® case: water, dust and impact resistant
- 3.3 lb (1.5 kg)
- B, B/M modes
- Auto enhanced field of view (auto adjusts focus, frequency, gain and other parameters)
- Digital beam-former
- Gestational tables
- Stores still frames and video loops
- 4GB storage for over 10,000+ still frames
- Voice label your stored images
- Li-Ion smart batteries with up to 6 hours of run time
- Multiple headset options
- 3 year warranty (warranty extension available)
- I.C.E. arms-free scanning available
- Linear, convex, micro-convex and specialty transducers available



TRANSDUCERS + PROBES



L8.0
High-frequency linear transducer
Equine tendons, small animal abdomens, neurovascular applications, superficial structures



MC8.0
High-frequency microconvex transducer
Small animal abdomen, bovine reproduction, small ruminant pregnancies... used in the OPU aspiration device



CL3.8
Low-frequency, deep penetrating convex transducer
Large animal abdomen, exotics, small ruminant



I.C.E.®
The Ibex® Customizable Extension lessens fatigue and stress on the user's arm and shoulder.
The I.C.E.® extension allows easy insertion or removal of the probe (compatible with Ibex® Pro L6.2MHz and CL13.8MHz transducers)



CL13.8
Side fire curved
Bovine reproduction, large animal abdomen, exotics, small ruminant



L6.2
Linear transducer
Bovine and equine reproduction, tendon



L3.8AS
Linear transducer
Bovine carcass merit



OPU Device
The OPU Aspiration Handle is a transvaginal needle guide device designed for use with the MC8.0MHz transducer
Used with long or short needles for dominant follicle reduction, ovum pickup, biopsy, ovarian infusions, scientific research

A word about our cables and transducers...

All IBEX® cables are tested to 1.2 million flex cycles:

- Polyurethane cable jacket is extremely durable, chemical resistant and biocompatible per USP Class VI
- Copper alloy coax and copper alloy tinsel shield developed for controlled elongation
- Kevlar strength members embedded in cable bundle to protect coax breakage
- All materials RoHS compliant

All transducers are designed specifically for rugged environments. But if the worst happens, they can be repaired, too!

ACCESSORIES



InSite® 2 Video Headset
Projects ultrasound images into a goggle-style headset
Ideal for working in bright sun and reflective conditions such as water.
Most commonly used in bovine reproduction, aquatics, wildlife

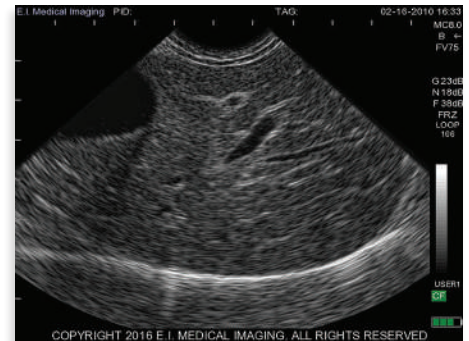


i3 Goggles
The all-new *i3 goggles* are offered in 2 models...monocular and binocular.
i3 goggles are small and lightweight—half the weight of InSight 2
800x600 color Oled display(s) with specifically designed eye cups for indoor and outdoor viewing
Mounts on hat, glasses or headstrap



Ibex® Waist Pouch
Accommodates the Ibex® Lite in closed position
Keeps unit self-contained and streamlined when scanning with headset

GALLERY



E.I. MEDICAL IMAGING

E.I. Medical Imaging® was founded in 1984 with the vision of developing a state-of-the-art, real-time ultrasound scanner to serve veterinarians and livestock producers world-wide.

Our products have evolved with the needs of the market. We are proud to be the only manufacturer of portable ultrasound systems engineered and developed in the United States specifically for the animal industry.

For over 30 years, the company's core values have remained intact: putting the customer first and delivering solid, effective ultrasound solutions. Today we are a world leader in the durable, portable, veterinary ultrasound industry.

CONTACT US

E.I. Medical Imaging toll-free/1.866.365.6596
110 12th St. SW, Unit 102 phone/970.669.1793
Loveland, CO 80537-6396 fax/970.669.1902
www.eimedical.com



EDUCATION

EIMI is committed to education. From online learning resources to classroom and wet lab training experiences, we are here to ensure that you get the most out of your ultrasound equipment. Our on-staff veterinarian and sales team are always available to assist you as you put your Ibex® system to work.

EIMI is also involved in educating future veterinarians, and offers two specific programs toward that end:

- EIU™ Student Externship Program—EIMI provides ultrasounds on loan to vet students for externship experiences. Contact us for more information.
- EIU™ Seminars—EIMI hosts ultrasound seminars at veterinary schools and in the field, comprising a short introductory lecture and hands-on wet labs. Please contact us to schedule.

CUSTOMER SUPPORT/LOANER PROGRAM

Downtime is not in the vernacular at E.I. Medical Imaging®—service is the hallmark of our business. We engineer systems specifically for veterinary use and understand the challenges downtime brings. With industry-leading service turnaround times and a free loaner program, we ensure continuity of your business. All service is conducted at our EIMI facility in Loveland, Colorado, using only genuine EIMI parts.